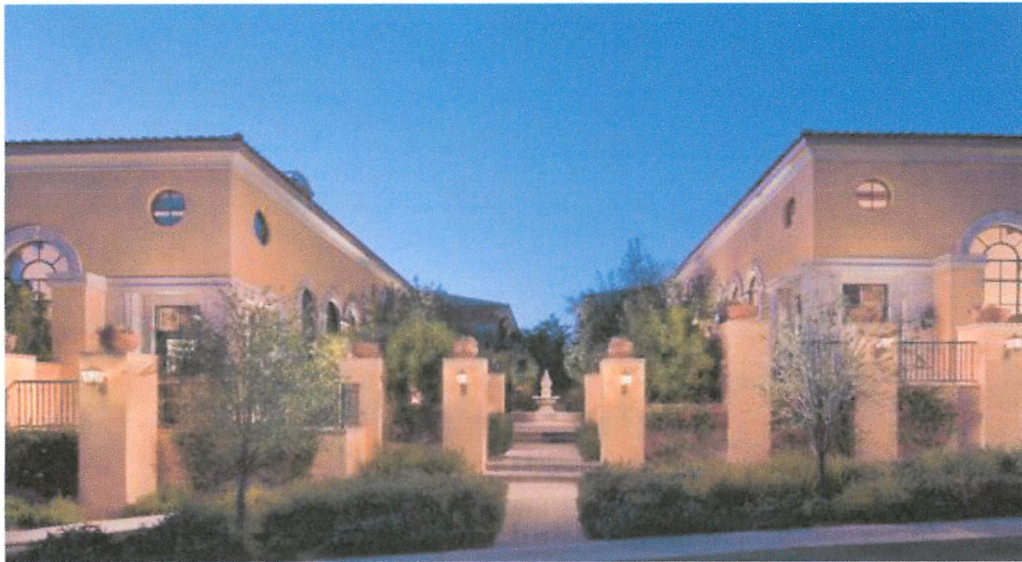


Construction Begins On Final Villas At Sterling At Silverleaf

by AZ Business Magazine | Posted on: Thursday, September 27th, 2012

Categories: [Economy](#) # [News](#) # [Real Estate](#)



♥ Get ShortURL



Tweet 1

Share

Like 13

More than \$7 million of real estate has sold at Sterling at Silverleaf since it re-launched in the market last November and now construction is underway of two of its final four remaining villas in phase one.

Starting at \$1.36 million, Sterling at Silverleaf is a collection of 16 villas designed by the world-renowned architect Bing Hu and developed by Sterling Collection Development Group.

Construction of the two new models will be completed in March and sell-out is expected by the end of the year. Sterling Collection Development Group is beginning the planning stages of phase two.

"We're proud of the success we've experienced over the past several months and we've been able to position ourselves on the leading edge of luxury development as the market begins to recover," said Nathan Day, president of Sterling Collection Development Group. "It was a big risk to launch a luxury residential community in an economy that indicated the timing wasn't right. But, for us, we wanted to get ahead of the market and we knew our product was unlike anything in the area. We priced the community aggressively. Buyers took notice of our value-driven approach and our rapid sales success proves it was the right decision."

Sterling at Silverleaf provides unmatched value for buyers looking to purchase within the prestigious Silverleaf community.

The real estate market in Silverleaf has held strong over the past year, consistently maintaining a higher price-per-square-foot average on closed homes in the Valley. Buyer and builder confidence remains high in the area with 34 homes currently under construction in Silverleaf. Overall, home inventory is down in Silverleaf and prices are increasing. Within the past year, home site sales have increased by 22 percent in the area.

In March, Sterling at Silverleaf was awarded gold-level certification by the National Association of Homebuilders green building program, NAHBGreen. This makes Sterling at Silverleaf the first and only single-family, new construction project in Arizona to achieve this level, making the villas the greenest homes in Arizona. There are less than 400 communities nationwide that have received gold-level certification.

Sterling at Silverleaf features a timeless approach to Mediterranean design and a distinctive combination of Italian Renaissance and Spanish Revival architecture. Lush courtyards, mature landscaping and sweeping mountain and city views offer residents a respite in the high-desert, while providing convenient access to upscale shopping, dining and entertainment. All villas include Crestron home automation systems operated by iPads, Isokern full masonry fireplaces, Trane FreshEffects air filtration systems and Wolf and Sub-Zero appliances throughout.

Silverleaf is recognized as one of Arizona's most sought-after residential communities, comprised of 2,000 acres nestled in the peaceful McDowell Sonoran Preserve. Home to the invitation-only Silverleaf Club, the club features a 50,000-square-foot rural Mediterranean-style clubhouse and spa, and an 18-hole golf course designed by PGA Champion Tom Weiskopf.

The Silverleaf Group of DMB Realty Network manages sales for the community and can be reached at (480) 502-6902. For more information on Sterling at Silverleaf, visit www.sterlingatsilverleaf.com.